

# CCE Foundation (formerly Sulu Fund)

With the support of:  
**DAVID AND LUCILE  
PACKARD  
FOUNDATION**

July, 2006  
Issue No. 15

NEWSLETTER  
(semi-annual)



## 500 delegates to converge for the 1<sup>st</sup> National Protected Area Summit

Jesselle Solivas

In every coastal municipality in the country, the local governments are at the forefront of efforts in managing their coastal resources. The establishment of marine protected areas (MPAs) by local governments is considered as an effective strategy for sustainable fisheries. The responsibility of establishing and managing MPAs has been spearheaded by a number of local leaders, while others are gradually internalizing the importance of effectively and efficiently managing MPAs.

With more than 800 municipalities situated along the coastal areas, the "1st National Marine Protected Area Summit" was conceptualized as the response to the increasing need for effective strategies in management of local government maintained MPAs.

*Adopting the theme "Building Coastal Stewards", the event aims to share the experiences of local governments...*

This big event is duly endorsed by the Department of Interior and Local Government, through its Memorandum Circular No. 2006-82. The summit will be held on October 18 to 20, 2006 at the Crown Regency Hotel in Mactan Island and expects to draw a crowd of more than 500 delegates of local chief executives, legislators, law enforcers, community leaders and implementing champions.

With CCE Foundation as the summit secretariat, the organizing committee has made headway in the preparations for the anticipated October event. The organizing committee is composed of Mayor Arleigh Sitoy of Cordova (Cebu), Mayor Rowell Sandoval of Mabini (Batangas) and Mayor Algerico Irizari of Lanuza (Surigao).

Adopting the theme "Building Coastal Stewards", the event aims to share the experiences of local governments that have been successful in managing and maximizing the benefits of establishing and sustaining marine sanctuaries. Speakers from academic and marine research institutions are also expected to attend and provide inputs on some of the emerging trends and challenges in the management of the coastal resources and marine sanctuaries.

During the three-day activity the participants will identify trends, gaps, and future challenges in strategies in local government managed MPAs as well as recognize best



practices and champions. The expected output is to create a Call to Action statement, known as the Cordova Accord, by the participating mayors which will be followed by a ceremonial signing. For more information on the 1<sup>st</sup> National Marine Protected Area Summit, check out our website at [www.coast.ph](http://www.coast.ph).

This event is possible through the collaboration of:



Province of Cebu



Municipality of Cordova



Municipality of Mabini



Municipality of Lanuza



## EDITORIAL

Why Networks of Marine Protected Areas?.....2

## PROJECT NEWS

500 Delegates to Converge for the 1st National.....1  
 Saving Philippine Reefs Expedition .....3  
 CCE Foundation Launches New Book.....3  
 CCEF Conducts MPA Monitoring Training.....4  
 CCE Foundation Expands Office in PDI.....4  
 An update on Coastal Law Enforcement.....5  
 PRISM Project for Family Welfare.....5  
 CCEF Organizes Study Tour for GENECCORD.....6

## FEATURES

CCEF Participates in EarthWatch.....6  
 The Packard Grantee Meeting in Palau.....7  
 CCEF Staff Climbs Osmeña Peak.....7

## CCE FOUNDATION TIDBITS

Staff Profiles.....8  
 New Publications.....8  
 Wishlist.....8

## Editors:

Dr. Alan T. White  
 Mrs. Evangeline White  
 Atty. Rose-Liza Eisma-Osorio

## Assisting/Managing Editors:

Sheryll Tesch  
 Jesselle Solivas

Layout and Design:  
 Sheryll Tesch

## Why Networks of Marine Protected Areas (MPAs)?

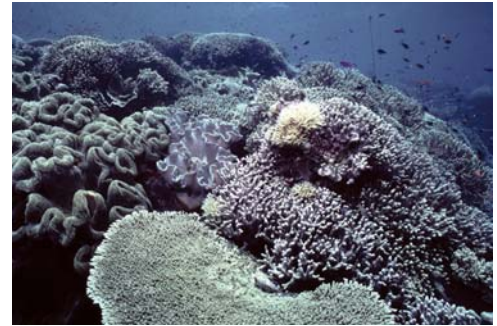
*Dr. Alan T. White*

The MPA Summit highlighted in this issue of our Newsletter is certainly a sign of real progress towards managing and protecting our marine environment. The reasons for establishing MPAs are sound and we certainly need more, well-managed MPAs in the Philippines. The CCE Foundation has several ongoing projects that address this need through assistance to MPAs that include:

- 1 Maintaining and sharing a database on all MPAs in the country;
- 1 Promoting a rating system for the level and quality of management in MPAs;
- 1 Assisting with field management in selected MPAs; and,
- 1 Learning and sharing lessons through a network of collaborators.

Collaboration is the key to success in this venture of developing a nationwide database and rating system for MPAs. Presently, more than 25 key Philippine organizations have joined the CCE Foundation and more are welcome. The benefits of this collaboration are that all concerned organizations and individuals can have a more or less equal perspective on progress in MPA establishment and management. The MPA database that can be viewed in summary form at: [www.coast.ph](http://www.coast.ph) contains 342 MPA records with 237 management ratings, 98 with biophysical data and 180 MPAs with community survey data.

But single MPAs are not the final solution! Although MPAs do represent the core of coastal management efforts because they are small and relatively controlled and measurable, they are helpless against the numerous pressures outside of MPA boundaries. With increasing fishing and other forms of use and development, MPAs become more like islands of life in a desert! And islands that are not connected in some manner, do not add up to a sum, larger than their parts. We must think more broadly in terms of coastal resource management that covers wider areas and helps protect our core of MPAs. And, we need to develop "networks" of MPAs that are ecologically and socially linked.



Municipal and city units are often the common denominator for planning, law enforcement and fisheries management in the Philippines. Most MPAs are also under municipal/city mandate but these government units must coordinate with each other to develop networks of MPAs and interlinked CRM programs. This will allow areas outside of MPAs to be brought closer to sustainable use levels. Otherwise, we will be left with increasing deserts of over fished, polluted and overdeveloped marine and coastal areas. And, we really need networks of functional and strategically located MPAs to improve our fisheries and to enhance the numerous benefits derived from healthy coral reefs. Let's improve the management of each MPA through management rating and strive to form networks of MPAs! Guidance for these efforts can be found in the new publication: *Creating and Managing MPAs in the Philippines* on our website. \*

### Board Members and Affiliations

#### President

**Dr. Alan T. White**

(Chief-of-Party, Program Integrator for the Indian Ocean Tsunami Warning System Program)

#### Vice-President/Treasurer

**Mr. William Jatulan**

(Deputy Chief-of-Party, Fisheries Improved for Sustainable Harvest (FISH) Project)

#### Secretary

**Mrs. Evangeline White**

(Finance Manager, CCE Foundation)

#### CRM Advisor

**Dr. Patrick Christie**

(School of Marine Affairs, U. of Washington)

#### Visayas Advisor

**Mrs. Rebecca Pestano-Smith**

(IEC Coordinator, FISH Project)

#### Community Work Advisor

**Mrs. Evelyn Deguit**

(Training Coordinator, FISH Project)

#### Institutional Development Advisor

**Dr. Thomas J. Mueller**

(Independant Educational Consultant)



## Saving Philippine Reefs Expedition at Calamianes Islands

The Saving Philippine Reefs (SPR) Expedition of international volunteers was held in a new site this year. The trip to the Calamianes group of islands proved to be a challenging one for both the staff and volunteers as they dove in new sites and encountered an exciting journey to the Palawan area. The sites surveyed were within the territories of the municipalities of Coron, Busuanga, and Culion.

With our loyal set of volunteers and four newcomers, the expedition was one filled with new experiences and friendships. The resort base chosen for the trip was the Sangat Island Reserve and Resort in Coron. It was a pristine setting that provided a white sand beach, an extraordinary shallow house reef for snorkeling enjoyment, and native beach huts that afforded the utmost comfort of simplicity and tranquility. Built in a sheltered cove of the island, the resort was ideal for our volunteers to relax after dive trips and explore its trails and catch glimpses of wildlife.

Most of the sites chosen for the expedition were project-assisted sites of the Fisheries Improved for Sustainable Harvest Project, managed by Tetra Tech EMI and supported by the United States Agency for International Development (USAID). As a relatively new project in the area, the marine protected areas were generally less than three-years old and were in their initiated and established level as rated by the MPA Management Rating System of CCE Foundation. What made Calamianes different from other sites was the presence of pearl farms in the area. The pearl farms culture pearls that are usually exported to

other countries and often some of the marine sanctuaries established in the Coron area have joint management agreements with the pearl farms to assist in adjacent marine protected area management and patrolling.

The sites covered were nine in all, offering the team different diving environments of rushing currents, like Calambuyan Island in Busuanga, and sheltered reefs like Siete Picados, where the reef area is surrounded by seven little islands. The itinerary of the dives allowed the volunteers to visit Coron's popular Barracuda Lake and swim in its fresher waters to search for its large Barracuda. They also did a wreck dive at the Olympia Maru, a 122-meter long Japanese cargo ship from World War II visited often by large fish and home to an assortment of coral species.

Although all the area offered relatively good dives, the general observations of the volunteers, which was also reflected in the data gathered, was the low numbers of butterflyfish and other colorful fish that are popular in the aquarium trade. This indicates that there is still a need for more protection in terms of establishing marine protected areas in some of the richer dive sites and in regulating fishing practices.

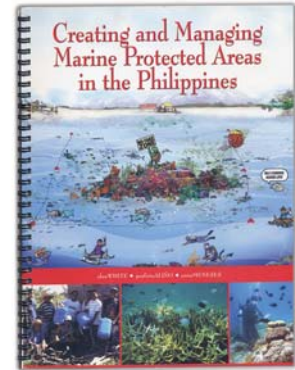
All in all, the trip was a success despite the challenges and uncertainties of implementing the trip in a new area. The results of the survey are currently being collated and analyzed which will be made into a report and distributed to the assisting organizations as well as to the municipalities with recommendations for improved management strategies. <sup>g</sup>



SPR Volunteers and staff (Standing): Julia, Mary, Sandra, Denise, Geoff, TJ, Sandy, Raffy, Ian, Alan (Principal Investigator), Aileen (Co-PI). (Sitting): Gaywynn, Ed, Brian, Vangie, Ethan, Sheryll, Anna, and Vittoria.

## CCE Foundation Launches New Book

Anna Meneses



A new book entitled **Creating and Managing Marine Protected Areas in the Philippines** was recently published by the collaborative effort of the Coastal Conservation and Education (CCE) Foundation, Inc., University of the Philippines Marine Science Institute, and the Fisheries Improved for Sustainable Harvest (FISH) Project. The book highlights the lessons learned over the many years of experience in implementing marine protected areas (MPAs). The book also presents widely accepted strategies and tools intended to assist and provide MPA managers in implementing their MPAs. The book is a simple and practical guide on how to improve MPA effectiveness and how to integrate MPAs in larger coastal management programs and MPA networks.

This publication provides the importance and the need for MPAs in the Philippine context. At the same time, it presents cases of success from which lessons and "best practices" were derived. The book outlines an implementation process to follow and a systematic method to evaluate management effectiveness designed to help achieve MPA objectives for resource conservation, equitable sharing of benefits, and positive social change.

The book will be formally launched during the First National Marine Protected Area Summit in Cebu, on October 18-20, 2006. Books will be distributed during the launching and the event, which is to be attended by mayors representing coastal municipalities nationwide. For more information about this publication, check out our website at [www.coast.ph](http://www.coast.ph). <sup>D</sup>

## CCEF Conducts MPA Monitoring Training in Batangas

Ethan Lucas

Mabini, Batangas – In an area known for its great diving conditions as well as high biodiversity in both fish and invertebrate species, Batangas local divers and dive guides underwent a dive training for reef monitoring to further protect these reefs by learning to assess and manage their precious underwater resources.

Arthur's Place dive resort hosted a CCE Foundation bio-physical monitoring training from June 20-22, 2006. There, three local divers from Tingloy and 10 dive leaders from the Mabini and Tingloy, were trained in bio-physical reef monitoring techniques and pledged their commitment to becoming an "MPA Monitoring Team" for the Mabini and Tingloy sites. These divers will be responsible for collecting data that will be turned over to CCE Foundation for analysis, and later stored in the Marine Protected Area (MPA) Database. These results will then be generated into reports that will guide the local management group in their decision-making processes concerning MPA management.

The successful event was organized and facilitated by MPA Project's Coordinator Batangas Area Coordinator, Jinky Macalintal and MPA Project Overall Coordinator, Anna Meneses. The Research/Monitoring Team's (REMOTE) Agnes Sabonsolin (Substrate Survey), Roxie Diaz (FVC) and Ethan Lucas (Dive Safety) conducted the technical training proper for the participants. Former CCE Foundation employee, Danny Ocampo, also lent a helping hand by providing additional knowledge on substrate survey techniques.

During the first day, the trainees were familiarized with bio-physical survey methods (SCUBA substrate survey and Fish Visual Census) as well as how to record the observed data underwater. These techniques were then combined with a land simulation survey that included substrate and fish identification. A series of practice surveys were conducted at Andulong wherein dive safety during research diving was emphasized. Once uncertainties were clarified, techniques refined and additional information distributed, official data was then recorded for the Arthur's Rock and Twin Rocks MPAs over the second and third days.

## CCE Foundation Expands Office in PDI Condominium

The Coastal Conservation and Education Foundation, Inc. has let go of its office in St. Michael Village, Banilad and has expanded the main office in the Philippine Duplicators, Inc. (PDI) condominium. The office's original room, Rm. 302, also the Alan White Library and Learning Center, is now connected to a new office room that will accommodate the administrative staff of the foundation.

To date, CCE Foundation maintains one main office and four field offices.

### Main Office:

3<sup>rd</sup> Floor, PDI Condominium, Archbishop Reyes Ave., Banilad, Cebu City 6000 Tel. Nos. (6332) 233-6909 or 233-6747; Fax. No. (6332) 233-6891; Email: [ccef@mozcom.com](mailto:ccef@mozcom.com); Website: [www.coast.ph](http://www.coast.ph)

### Field Offices:

(Local Governance for Coastal Management Project)  
Municipality of Alcoy, Cebu

(Local Governance for Coastal Management Project / Integrated Population and Coastal Management Project)

Municipality of Siquijor, Siquijor  
Tel. No.: (035) 442-2252

(Marine Protected Area Project)  
Municipality of Mabini, Batangas

(Integrated Population and Coastal Management Project / PRISM Project)  
Olango Island, Lapu-lapu City, Cebu (

The following week after the bio-physical monitoring training, Jinky gave feedback to the Coastal Resource Management Board (CRMB) of Mabini regarding the activity, as well as of the trainees "pledge of commitment" to become a reef monitoring team. Mayor Rowell M. Sandoval of Mabini was delighted in the outcome of the activity and suggested to the CRMB to make the team the official Mabini Monitoring Team. The CRMB was presented with suggestions of possible rewards for the monitoring team for conducting the bio-physical monitoring activities which included free yearly dive passes, issuance of identification cards, as well as certificates of participation.

Many thanks go to the private businesses (Solana Bezo Resort, Planet Dive Resort, Eagle Point Resort), organizations (CRMB-Tingloy, CRMB-Mabini, Aroma Dive Boat Association), LGUs (Mabini and Tingloy) and NGOs (CCE Foundation and WWF) that provided assistance (cash and in kind) in support of the training. All trainees successfully com-

pleted the three-day training, participating fully in every activity while learning to gather quality bio-physical data.

In future directions of this ongoing project, CCE Foundation will be working very hard to gain the same amount of support from the municipal government and CRMB to broaden the scope of the monitoring team's work and become the official "Mabini-Tingloy Monitoring Team".

As participant Divemaster, Bongskee Banaag, said during the closing ceremonies, "Being in this training made me realize that there is more to diving than just being an observer. It made it easier for me to care about protecting the environment." <sup>1</sup>



The team sits with the local divers to discuss their dive plan and other monitoring concerns.



## An Update on Coastal Law Enforcement in Southeastern Cebu

*Rizaller Amolo*

Operative and effective coastal law enforcement (CLE) mechanisms, an important strategy to manage municipal fisheries, are currently amongst the top priorities of eight southeastern Cebu municipalities of the Southeastern Cebu Coastal Resource Management Council (SCCRMC) which was created to address this concern, among others. Over 200 fishers were deputized in the said municipalities along with municipal police officers who have committed to assist in regulating fishery activities and enforcing fishery laws in their municipal waters.

Each municipality is likewise pursuing CLE objectives. In Sibonga, the CLE Team composed of deputized fish wardens and municipal police officers conducts regular patrolling to deter commercial fishing vessel intrusions into municipal waters. Their seaborne operations are coordinated with the Philippine National Police –

Regional Mobile Group which is stationed in the municipality. The Argao *Bantay Dagat* Commission is fully equipped to respond to violations reported by their fishers and *barangay* fish wardens. The Dalaguete Coastal Police see to it that minor violations are dealt with in every coastal *barangay*. The Alcoy Kingfishers Organization rigorously watches over its marine protected areas and its municipal fishing grounds. The municipality of Boljoon strictly regulates both commercial and municipal fishing in their municipal waters. Finally, the Oslob Fish Warden Association, Santander Fishwarden Association, and Samboan Fishwarden Association have proven to be strong in seaborne operations against illegal fishers.

Due to the common concerns of each municipality, joint CLE activities and operations have been undertaken. A main activity is the OPLAN Sundown Bravo. This

operationalized the cluster-wide surveillance and apprehensions program. This also included other activities such as regular patrolling of municipal waters and marine protected areas and active participation in the formulation and advocacy of municipal and cluster-wide fisheries management policies.

Much of the cluster-wide accomplishments were achieved through joint operations and the maintenance and repair of their patrol boat (SADABOSS). Implementation was possible due to the support given by the municipal governments and the SCCRMC through logistics (fuel, flashlights, nautical charts, GPS units, etc.), adoption of the reward and incentive system, and collaboration with other organizations such as CCE Foundation, Environment Legal Assistance Center (ELAC), Bureau of Fisheries and Aquatic Resources (BFAR), and Coastal Law Enforcement Alliance Region 7 (CLEAR-7). *£*



## The PRISM Project for Family Welfare in the Workplace

*Analeh Patindol*

There is a new project in CCE Foundation this year. The Private Sector Mobilization for Family Planning (PRISM), a United States Agency for International Development (USAID) supported program, contributes to the overall goal of improving the quality of life by increasing private sector participation in the provision of family planning services and products.

The Mactan Economic Zone, through the Mactan Export Processing Zone-Human Resources Association (MEPZ-HRA), in partnership with CCE Foundation will specifically implement the PRISM program through a one-year project entitled “**Building responsible families towards enhanced productivity in the workplace: Institutionalizing a family welfare program in the Mactan Economic Zone**”.

Thirty (30) MEPZ-HRA member companies will be the firm beneficiaries of the said project. The proposed project aims to promote the institutionalization of the family welfare program in the workplace through technical assistance, capacity building and social marketing.

The specific project objectives are to (1) assist identified private firms to install sustainable family welfare programs, corresponding policies, and support systems; (2) conduct capacity building activities of a firm’s key personnel in implementing a sustainable family welfare program; and (3) implement policy formulation, communication and social marketing campaigns to increase the general public’s awareness on the thrusts of the family welfare programs.

The objectives will be achieved through the implementation of four project components, namely (1) policy formulation, advocacy and social marketing; (2) training and capacity building of key personnel; (3) family welfare services delivery; and (4) monitoring and evaluation of project performance.

Benefits and assistance packages are being provided by PRISM for the MEPZ companies through CCE Foundation with funds to cover technical assistance, training on family planning, project management, work planning, information, education and communications (IEC) planning, monitoring and evaluation, research, monitoring and evaluation, and productivity measurement.

The program also opens up opportunities for member companies to comply with labor regulations, enhance labor-management cooperation, link companies with family planning products and service providers, and share experiences and best practices with other companies.

To make integration into the program manageable and feasible, the companies are only obligated to directly involve at least 4 company personnel. As much as possible, the project activities are integrated into regular employee activities (such as staff meetings or staff development activities) in order not to disrupt workflow. The project also uses computer-based surveys for project monitoring and evaluation and reporting activities which also utilizes available company data. The family planning service provision will also be integrated into existing health service delivery mechanisms.

No registration fees are required for companies to join and become a beneficiary of these offered programs. It is the goal of PRISM to build responsible families which will ultimately improve productivity in the place of work. *o*

## CCEF participates in Earthwatch Expedition in Thailand

Roxy Diaz



Roxy Diaz (front, left) with expedition team members during a reef check in Chumphon National Park, Thailand.

From May 30 to June 9, 2006, I attended an Earthwatch Expedition in Chumphon Province National Park in the Gulf of Thailand. The expedition was hosted by the Thailand Chapter of Reef Check International led by the expedition leader, Kim Obermeyer. The activity also coincided with the 60<sup>th</sup> anniversary of Thailand's monarch's succession to the royal throne.

The expedition chose six young Southeast Asian marine scientists to represent their organizations and countries in the 10-day activity. Of the six, three of us were Filipino and the others were Vietnamese, Indonesian, and Malaysian. The goal of the trip was to survey and gather biophysical data of new reefs in Chumphon National Park using standard Reef Check methods and protocols. The surveys took place in five reefs and four islands within the park using scuba and snorkel.

Being my first time out of the Philippines, the trip itself was already adventurous despite a few hitches in the beginning of the trip. Although I was there to learn the methods and techniques during the expedition, it became a venue for me to share the success stories and case studies of CCE Foundation in the Philippines. I became an instant facilitator and lecturer during the trip due to my background as a member of CCE Foundation's Reef Monitoring Team.

Although CCE Foundation reef monitoring methods entail much more detailed data sets, it was refreshing to experience another monitoring method that simplified the technique for a wider audience involved in conservation efforts. The expedition allowed me to make new contacts with international participants and expand my coastal resource management network. And most importantly, apart from learning a different reef assessment method, I also learned how to concoct unique dishes using very hot chili peppers!

## CCEF Organizes Study Tour for CENECCORD Members in Cebu

Marettes Alenton

From May 17 to 20, 2006, the Central Negros Council for Coastal Resources Development (CENECCORD) study tour took place in Cebu. CENECCORD is an alliance of seven coastal local government units in the province of Negros Occidental, namely Bago City, Palupandan, Valladolid, San Enrique, Pontevedra, Hinigaran and Binalbagan. The group's current chairperson is Honorable Janet F. Torres, the Mayor of Bago City.

The CENECCORD study tour, which was organized by their executive director, Ms. Elma Erobas, sought the assistance of CCE Foundation. The main objective of the tour was to gain knowledge and first hand experience on the factors contributing to successful CRM project implementation in different municipalities of Cebu Province. The 60 participants consisted of Mayors, Vice Mayors, SB members, Fishery Technicians, FARMC Chairpersons and Coastal *Barangay* Captains.

One of the highlights of the trip was the welcome dinner for the participants at the Provincial Capitol, hosted by Governor Gwen Garcia with the Provincial Board Member, Victor Maambong (Chairperson on Committee on Environment) delivering a welcome and inspirational message that challenged the local leaders to undertake coastal and marine resources in their areas as Cebu has proudly, and actively, been doing.



The CENECCORD CRM Tour exposed participants to local champions and leaders implementing CRM best practices in their areas. (Top) The group meets Toti Menguito as he speaks of the successful Gilutongan Marine Sanctuary; (Top-right) Dr. Eugene Matildo explains Boljoon's successful initiatives in coastal law enforcement; (Bottom-right) Mayor Ronald Allan Cesante meets the participants and shares Dalaguete's successes in solid waste management and foreshore management initiatives.

The itinerary of the study tour included the following areas of interest with corresponding strengths in project implementation: (1) Municipality of Cordova's Gilutongan Marine Sanctuary; (2) Municipality of Dalaguete and their foreshore management initiatives; (3) Municipality of Alcoy and the successfully managed Daanlungsod-Guiwang Marine Sanctuary run by the local community and their municipal government; and (4) Municipality of Boljoon with outstanding programs in coastal law enforcement, fisher and boat registration, and the Southeastern Cebu Coastal Resource Management Council (SCCRMC) cluster of municipalities' processes, systems and procedures.

A major lesson for CENECCORD, during the tour, was that multi-institutional collaboration between the community, municipal governments, provincial government, national government agencies, and non-government organizations is the biggest and most important contributing factor in successful management of coastal and marine resources. CENECCORD expressed their interest in accessing training and technical assistance from CCE Foundation in the future to strengthen their own council and their municipalities in coastal resource management. s





## The Packard Grantee Meeting in Palau: A Healthy Dialogue Amidst a Delightful Seascape!

Atty. Rose-Liza Eisma Osorio

The venue was Palau International Coral Reef Center at Koror, Palau. With the Palau Conservation Society as our gracious host, the Packard Grantee Meeting on April 2006 was marked with a healthy mix of serious discussions and friendly networking as well as an enjoyable tour of the stunning reefs found at Palau's famous Rock Islands.

The three-day meeting was attended by grantees of Packard Foundation coming from seven countries of the Western Pacific: the Philippines, Indonesia, Palau, Pacific States of Micronesia, Papua New Guinea, Solomon Islands, and Fiji. The main agenda focused on the presentation and re-validation of primary findings of the Western Pacific Program Evaluation, together with workshops that will help Packard Foundation, specifically the Western Pacific Program, refresh its program strategies. The meeting was also an opportunity for the grantees to be introduced to some of the key staff of Packard Foundation: Carol Larsson (President), Walt Reid (Head of the Conservation and Science Program), and Program Officers Bernd Cordes, Pam Seeto and Kathy Hesse.

For two days, much attention was given to the pressing threats and significant opportunities present in the Western Pacific

which is considered the epicenter of coral and fish diversity. To address these issues, the grantees were asked to identify strategic plans so that the greater goals of sustainability and monitoring/enforcement of marine protected areas are met.

The workshop was not all formal meetings and intense discussions. We were also rewarded with a relaxing and exciting Rock Island Tour on the third day. During the Rock Islands day tour, we visited four major points of interest. First we visited Jacques Cousteau's favorite dive spot, the Big Drop, where one can see many extraordinary and unique variations of coral reef and fishes. Then, we enjoyed a hearty lunch at the Rock Island beach where we relaxed in a stunning landscape of white sand beaches, aquamarine waters, and untouched islets. Afterwards, we were privileged to observe "sting-less" *mastigia* jellyfish that seemed to dance at their own pulsating rhythms at one of the most visited places in Palau – Jellyfish Lake. Finally, on our way back, we stopped at The Cemetery, a marine

protected area where we were surprised to see, not tombstones, but oft-observed, large-sized and diverse species of soft and hard corals teeming with colorful angelfishes, groupers, butterflyfishes and wrasses.

The meeting was all about a "strategy refresh" by the Packard Foundation, as elaborated by the Packard officers who facilitated the meeting. On top of the many lessons we learned from the discussions, we also learned first-hand, through our island tour of Palau, that there can be a remarkable improvement in coastal and marine ecosystems through effective protected areas, not merely the presence of marine protected areas. w



Swimming among the colorful, stingless jellyfish in Jellyfish Lake!

## CCE Foundation Staff Climbs Osmeña Peak

Agnes Sabonsolin

The CCE Foundation had their second quarterly Staff Development activity at the Department of Environment and Natural Resources (DENR) forest reserve in Dalaguete, Cebu. The activity began with a courtesy call to Mayor Cesante of Dalaguete with Executive Director, Rose-Lisa Eisma-Osorio and Administrative Manager, Jesselle Solivas, after which everyone headed out towards the DENR sub-station office. The change of scenery was exhilarating for most, especially for the field personnel who spend much of their work alternating between the *coastal* barangays and the city.

During the ride to our destination, we were in awe of the scenic view that lay before us. Mother Nature allowed us glimpses of fresh vegetables yet to be harvested, goats nibbling contentedly at the greenest grass and at beautiful variations of acacia trees that loomed over the quiet village. We kept

marveling at how the area seemed so untouched by civilization. Too soon it seemed, we reached our first destination, the Mantalungon market. After a half hour of exploring the area – examining fresh produce and the town buildings – we headed back to the DENR office where we were to spend the night.

Upon pitching our tents, we started with the program proper wherein games, facilitated by representatives from every project, were played to enhance teamwork between officemates. Being a small group, it was amazing how much one can still learn from co-workers. We continued this for hours before retiring for the night in order to prepare ourselves for the next day of hiking that lay ahead.

Early the next morning, everyone started trekking towards Osmeña Peak after breakfast. It was a long walk and something

very different for office-based personnel, who at some point felt like giving up. Fortunately, the municipal surveyor's vehicle that happened to drive along offered to give us a lift all the way towards the base of Osmeña Peak. The staff trudged up to the peak for about 15 minutes and enjoyed the marvelous view laid out before them that was framed by the occasional fog.

Although the trek wore the staff out, the fact that we were there as a team was well worth it. Looking back, it was a feat well-accomplished. Many thanks to the Municipality of Dalaguete, DENR, and the administrative staff of CCE Foundation who worked hard for weeks for this activity's success. If there was one thing we learned that day, it was that you can't carry the world on your shoulders alone. A twig can break easily, but if grouped in a bundle, it would take more than raw force to break them apart. c

## Staff Profiles

Jesselle Solivas

A warm welcome to our newest CCE staff members:

**Idel Rojo and Girlie Duhaylungsod** are the new Integrated Population and Coastal Resource Management (IPOPCORM) Siquijor staff, replacing Eva Marie Ongy and Edna Lilibeth Duhaylungsod who are both working full-time for the Local Governance for Coastal Management Project (LGCMP). Both Idel and Girlie are licensed midwives who have been working as volunteers in the Rural Health Unit of Siquijor.

**Matthias Bohne** is our French intern helping the Suba-Olango Ecotourism Cooperative (SOEC). He is taking up his Masters in Local Development and Management in Paris – La Sorbonne.

**Darwin John Raymundo** is the new Research Monitoring Team Leader. Darwin worked with Bantay Kalikasan and Fundacion Santiago before joining CCE Foundation. He has a bachelor's degree in Biology and Masters in Marine Biology (units).

**Rochae Cameron** is our Australian Youth Ambassador for Development (AYAD). She hails from Rockhampton, Queensland and will be working with the MPA Database and REMOTE of CCE Foundation for one year.

**Martina Keller** is a volunteer from Germany who will be assisting in different projects of the foundation. Martina is a Summa Cum Laude graduate in biology from the University of Bremen.

**Rosalie Ripiccini** is a volunteer from Italy who recently relocated to Cebu. She will be assisting the foundation in the upcoming MPA Summit and other community activities.

A warm welcome to our interns from Velez College, **Asther May Belarmino, Marigold Gabucan** and **Rachelle Martinez** who are assisting with the A. White Library and Learning Center and the upcoming MPA Summit.

and...

so long and good luck to **Aileen Maypa** (Research Coordinator) and **Dioli Ann Payo** (REMOTE Team Leader) who will both be taking their Ph.D.'s this coming August in Hawaii and Belgium, respectively.

### New Publications

White, A.T., P.M. Aliño and A.T. Meneses, 2006. **Creating and managing marine protected areas in the Philippines.** Fisheries Improved for Sustainable Harvest Project, Coastal Conservation and Education Foundation, Inc. and University of the Philippines Marine Science Institute, Cebu City, Philippines. 83 p.

White, A.T., E. Deguit, W. Jatulan, and R.L.Eisma-Osorio. 2006. **Integrated coastal management in Philippine local governance: Evolution and benefits.** Integrated Coastal Zone Management (ICZM) – The Global Challenge. In press.

White A.T., A.T. Meneses, S. Tesch, A.C.Z. Sabonsolin. 2006. **Management rating system for marine protected areas: An important tool to improve management.** Integrated Coastal Zone Management (ICZM) - The Global Challenge. In press.



GPS  
units

17"  
colored  
printer

External  
hard disk

USB  
stick  
drives

Underwater  
camera

Laptop

## The Coastal Conservation and Education Foundation, Inc.

3rd Floor, PDI Condominium,  
Archbishop Reyes Avenue, Banilad,  
Cebu City, Philippines

Phone: (6332) 233-6909 or 233-6947

Fax: (6332) 233-6891

Email: [ccef@mozcom.com](mailto:ccef@mozcom.com)

Website: [www.coast.ph](http://www.coast.ph)

### “Promoting leadership for improved coastal resource management”

The Coastal Conservation and Education Foundation, Inc. (formerly Sulu Fund) was founded in 1998 to support marine conservation in the Philippines. The first name was taken from the Philippines' southern Sulu Sea known for its extremely high marine biodiversity unequalled in the world. The new name, Coastal Conservation and Education Foundation, is more functional and reflects the organization's goals. The CCE Foundation is focused on protecting the marine environment. It tries to help conserve and manage coral reef ecosystems and other coastal resources while promoting sustainable uses for the benefit of people throughout time.

### The A. White Library and Learning Center for Coastal Resource Management

The A. White Library and Learning Center's information resources on coastal resource management and related disciplines are continuously growing! The library and learning center serves as a one-stop-shop for information and training needs on coastal management. It houses more than 2000 volumes and 5000 reprints and reports, by far the most extensive library on coastal management in the Philippines. At the same time its training facility provides a conducive venue for experts, community leaders, and other key sectors to come together, discuss issues, ideas and concerns on coastal conservation.

For more information on the A. White Library and Learning Center's services and rates, please contact us at [ccef-lib@mozcom.com](mailto:ccef-lib@mozcom.com) or the abovementioned contact numbers.